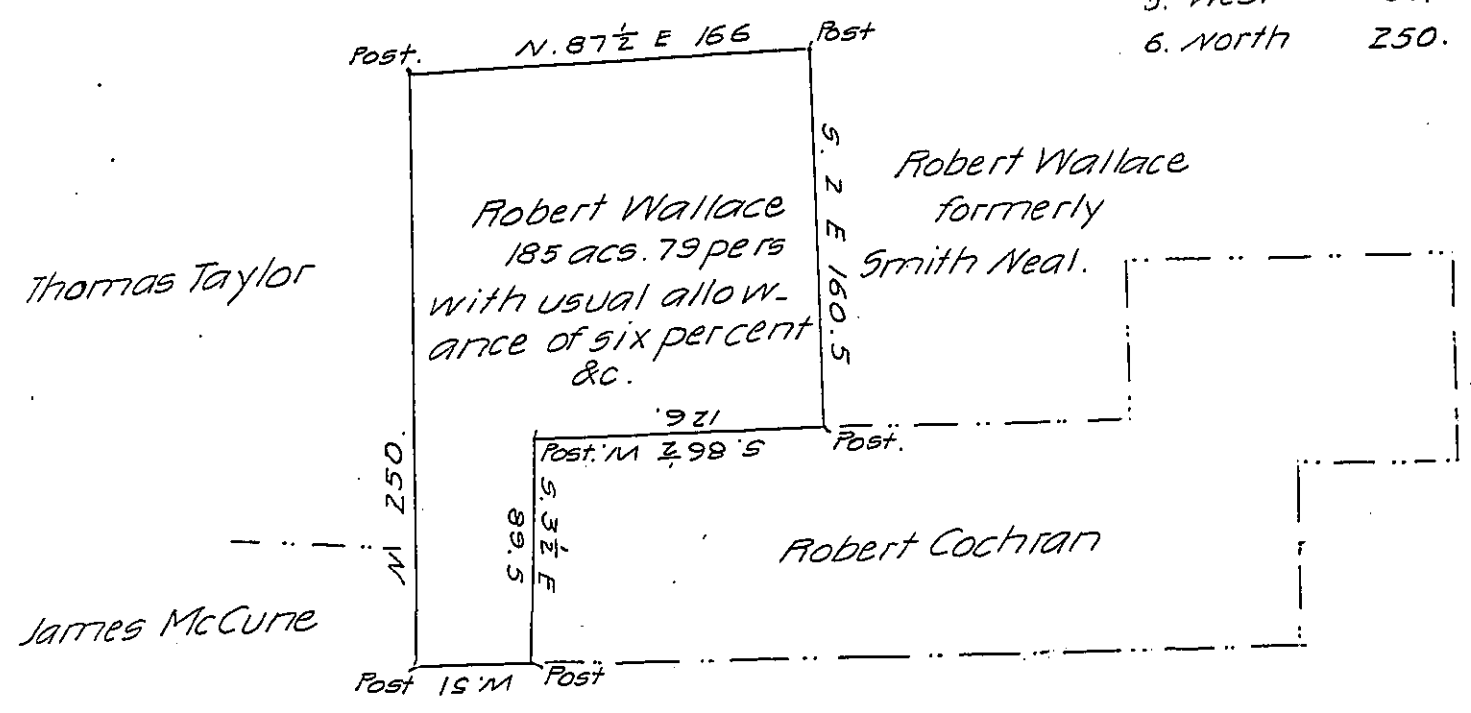


FORM NO. 1.

Joseph Elder.

- 1. N. 87 1/2 E 166 pr
- 2. S. 2. E 160.5
- 3. S. 86 1/2 W. 126.
- 4. S. 3 1/2 E 89.5
- 5. West 51.
- 6. North 250.



The above is a draft of a tract of land situate in Slippery-Township on the waters of Slippery rock Creek in Mercer County. Being part of a tract of land settled and improved by Smith Neal. Surveyed this 6th day of May 1823. In pursuance of a Warrant granted to Robt. Wallace on the 21st day of February 1815, and contains one hundred and eighty five acres and 79 perches with the usual allowance of six per cent for roads &c. Bounded as above.

Given under my hand this 17th day of June 1823.

A. Brown D.S. Mercer County

To Samuel Cochran Esqr.

Surveyor General.

IN TESTIMONY that the above is a copy of the original remaining on file in the Department of Internal Affairs of Pennsylvania, made conformably to an Act of Assembly approved the 16th day of February 1833, I have hereunto set my hand and caused the Seal of said Department to be affixed at Harrisburg, this fourth day of September 1907

Henry Howell
Secretary of Internal Affairs.